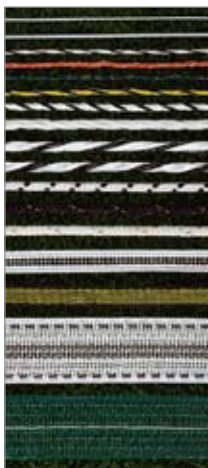


Which conductor is most visible?

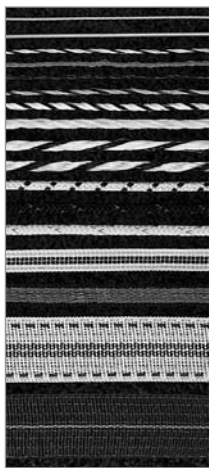
The relative visibility of fences to both animals and humans is critical. Why?

1. The more readily it is seen, the more likely it will work to stop livestock and wildlife.
2. Visibility = avoidance = safety.

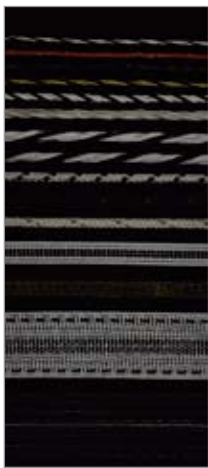
But there are major differences between animals and humans in the ability to see fences. Animals see color poorly. Their world is largely black, white and grays. But most have much better night vision.



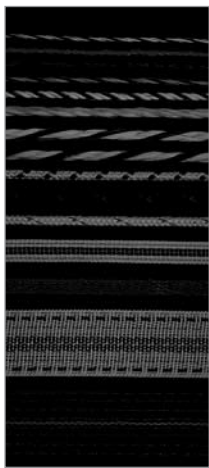
Humans see (daylight)



Animals see (daylight)



Humans see (at night)



Animals see (at night)

These photos contain, in descending order, MaxiShock, HT wire, IntelliTwine, polywire, rope, braided rope, tape, etc. They simulate both direct sunlight and “nightlight.” To simulate animal vision, we reduced the color and enhanced the amount of “light at night.”

Conclusions:

- *Size matters—larger is always better.*
- *Contrast matters—black/white is much more visible than solid white, green, orange or black.*